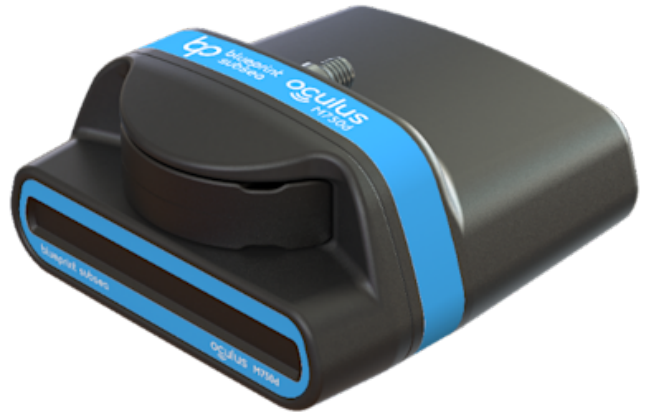


OCULUS M750D DUAL-FREQUENCY MULTIBEAM SONAR

SKU: BPS-OCU-M750D

Blueprint Subsea Oculus M-serie er best i klassen av multibeam sonarer for mini-ROVer. Oculus M750d gir deg svært høy bildekvalitet i en kompakt og robust enhet. Dybderangering er på hele 500 meter.

Leverandør: Blueprint Subsea



TEKNISK SPESIFIKASJON

Mechanical

Dimensions	122 mm (L) x 122 mm (W) x 62 mm (H)
Construction	Anodised Aluminium
Weight	980 g (Air), 360 g (Water)
Depth Rating	500 m
Temp. Range (operating)	-5°C up to +35°C
Temp. Range (Storage)	-20°C up to +50°C

Performance

Operating Frequency	750 kHz / 1.2 MHz
Range (maximum)	120 m / 40 m
Range (minimum)	0.1 m
Range Resolution	4 mm / 2.5 mm
Update Rate (maximum)	40 Hz
Horizontal Aperture	130° / 130°

Vertical Aperture	20° / 20°
Number of Beams (maximum)	512
Angular Resolution	1° / 0.6°
Beam Separation	0.25° / 0.25°

Electrical

Connector	Impulse IE55 Series, 6-way
Communications	4-wire 100-BaseT Ethernet 2-wire DSL extender module
Supply Voltage	12 V to 32 V DC non-isolated
Power Consumption	10 W to 35 W (model and range dependent)
Integrated Sensor	Water pressure and temperature (for Velocity-of-Sound calculations)